

**BALDOR® • RELIANCE** 

**Product Information Packet**

**IDM3774T-5**

**48M 4P TEBC HOR 215TC T'STATS INVERTER**

| Part Detail |        |             |            |             |        |               |            |
|-------------|--------|-------------|------------|-------------|--------|---------------|------------|
| Revision:   | A      | Status:     | PRD/A      | Change #:   |        | Proprietary:  | No         |
| Type:       | AC     | Elec. Spec: | 07WGX493   | CD Diagram: | CD0006 | Mfg Plant:    |            |
| Mech. Spec: | 07D515 | Layout:     | 07LYD515   | Poles:      | 04     | Created Date: | 03-18-2019 |
| Base:       | RG     | Eff. Date:  | 07-11-2019 | Leads:      | 3#14   |               |            |

| Specs                           |                         |                                |                       |
|---------------------------------|-------------------------|--------------------------------|-----------------------|
| Catalog Number:                 | IDM3774T-5              | KVA Code:                      | H                     |
| Enclosure:                      | TEBC                    | Lifting Lugs:                  | Standard Lifting Lugs |
| Frame:                          | 215TC                   | Locked Bearing Indicator:      | Locked Bearing        |
| Frame Material:                 | Iron                    | Motor Lead Quantity/Wire Size: | 3 @ 14 AWG            |
| Output @ Frequency:             | 10.000 HP @ 60 HZ       | Motor Lead Exit:               | Ko Box                |
| Synchronous Speed @ Frequency:  | 1800 RPM @ 60 HZ        | Motor Lead Termination:        | Flying Leads          |
| Voltage @ Frequency:            | 575.0 V @ 60 HZ         | Motor Type:                    | 0748M                 |
| XP Class and Group:             | None                    | Mounting Arrangement:          | F1                    |
| XP Division:                    | Not Applicable          | Power Factor:                  | 81                    |
| Agency Approvals:               | UR                      | Product Family:                | General Purpose       |
|                                 | CSA                     | Pulley End Bearing Type:       | Ball                  |
| Auxillary Box:                  | No Auxillary Box        | Pulley Face Code:              | C-Face                |
| Auxillary Box Lead Termination: | None                    | Pulley Shaft Indicator:        | Standard              |
| Base Indicator:                 | Rigid                   | Rodent Screen:                 | None                  |
| Bearing Grease Type:            | Polyrex EM (-20F +300F) | RoHS Status:                   | ROHS COMPLIANT        |
| Blower:                         | BLOWER                  | Shaft Extension Location:      | Pulley End            |
| Current @ Voltage:              | 10.000 A @ 575.0 V      | Shaft Ground Indicator:        | No Shaft Grounding    |
| Design Code:                    | A                       | Shaft Rotation:                | Reversible            |

Product Information Packet: IDM3774T-5 - 48M 4P TEBC HOR 215TC T'STATS INVERTER

|                                       |                           |                                    |                            |
|---------------------------------------|---------------------------|------------------------------------|----------------------------|
| <b>Drip Cover:</b>                    | No Drip Cover             | <b>Shaft Slinger Indicator:</b>    | No Slinger                 |
| <b>Duty Rating:</b>                   | CONT                      | <b>Speed Code:</b>                 | Single Speed               |
| <b>Electrically Isolated Bearing:</b> | Not Electrically Isolated | <b>Motor Standards:</b>            | NEMA                       |
| <b>Feedback Device:</b>               | NO FEEDBACK               | <b>Starting Method:</b>            | Direct on line             |
| <b>Front Face Code:</b>               | Encoder/Feedback Device   | <b>Thermal Device - Bearing:</b>   | None                       |
| <b>Front Shaft Indicator:</b>         | None                      | <b>Thermal Device - Winding:</b>   | Normally Closed Thermostat |
| <b>Heater Indicator:</b>              | No Heater                 | <b>Vibration Sensor Indicator:</b> | No Vibration Sensor        |
| <b>Insulation Class:</b>              | H                         | <b>Winding Thermal 1:</b>          | None                       |
| <b>Inverter Code:</b>                 | Inverter Duty             | <b>Winding Thermal 2:</b>          | None                       |

| Nameplate NP1162L |                      |
|-------------------|----------------------|
| CAT NO            | IDM3774T-5           |
| SPEC.             | 07D515X493G1         |
| FRAME             | 215TC HP 10 TE       |
| VOLTS             | 575                  |
| MAG CUR           | 4.1 FLA 10           |
| RPM               | 1760 RPM MAX 4000    |
| HZ                | 60 PH 3 CLASS H      |
| SER.F.            | 1.00 DES A SL HZ 1.3 |
| NEMA-NOM-EFF      | 92.4 WK2 1.18        |
| BLWR V            | PH HZ A              |
| RATING            | 40C AMB-CONT         |
| DE BRG            | 6307 ODE BRG 6206    |
| CC                | 010A SN              |

| Parts List    |   |          |
|---------------|---|----------|
| Part Number   | Description                               | Quantity |
| SA371173      | SA 07D515X493G1                           | 1.000 EA |
| RA360853      | RA 07D515X493G1                           | 1.000 EA |
| HW3201A05     | 3/8-16 EYEBOLT                            | 1.000 EA |
| 09CB3002SP    | CB W/1.38 LEAD HOLE FOR 37, 39, 307 & 30  | 1.000 EA |
| 09GS1000SP    | GASKET-CONDUIT BOX, 1/16 THICK LEXIDE     | 1.000 EA |
| 51XW2520A12   | .25-20 X .75, TAPTITE II, HEX WSHR SLTD   | 2.000 EA |
| 59XW2520G07   | .25-20X.44,HEX SER WSHR,TAPTITE 2,GREEN   | 1.000 EA |
| 37EP1100B61   | FR TEBC 206 BRG W/ GRSSR & THRU-SHAFT ENC | 1.000 EA |
| HW4500A01     | 1641B(ALEMITE)400 UNIV, GREASE FITT       | 1.000 EA |
| HW5100A06     | W2420-025 WVY WSHR (WB)                   | 1.000 EA |
| 37EP1300A01SP | FACE MT ENDPLATE-ENCL-307 BRG-213TC-215T  | 1.000 EA |
| HW4500A01     | 1641B(ALEMITE)400 UNIV, GREASE FITT       | 1.000 EA |
| 10XN2520A30   | HEX HD CAP SCREW-STD THD-.25 X 20 THD PE  | 4.000 EA |
| HW1001A25     | LOCKWASHER 1/4, ZINC PLT .493 OD, .255 I  | 4.000 EA |
| XY3118A12     | 5/16-18 HEX NUT DIRECTIONAL SERRATION     | 4.000 EA |
| 10XN2520A08   | 1/4-20X1/2 HEX HEAD CAP                   | 2.000 EA |
| 09CB3501SP    | CONDUIT BOX LID FOR 09CB3001 & 09CB3002   | 1.000 EA |
| 09GS1013SP    | 09 GS FOR 09CB3501 LID - LEXIDE           | 1.000 EA |
| 51XW2520A12   | .25-20 X .75, TAPTITE II, HEX WSHR SLTD   | 2.000 EA |
| HA1005A11     | SLINGER, OD 2.00, ID 1.15,                | 1.000 EA |
| HW2501F21     | KEY, 5/16 SQ X 2.375                      | 1.000 EA |
| HA7000A02     | KEY RETAINER RING, 1 1/8 DIA, 1 3/8 DIA   | 1.000 EA |
| 85XU0407S04   | 4X1/4 U DRIVE PIN STAINLESS               | 2.000 EA |
| LB1115N       | LABEL,LIFTING DEVICE (ON ROLLS)           | 1.000 EA |

| <b>Parts List (continued)</b> |  |                 |
|-------------------------------|--|-----------------|
| <b>Part Number</b>            | <b>Description</b>                       | <b>Quantity</b> |
| MJ1000A02                     | GREASE, MOBIL POLYREX EM - 124047        | 0.050 LB        |
| BLWM07-F                      | 307 BLOWER ASSY. (07FH4015 & EF5100) F1, | 1.000 EA        |
| WD4101A08                     | STIMPSON #D3557,1.188 DIA. HOLE PLUG     | 1.000 EA        |
| MG1000G27                     | MED CHARCOAL METALLIC GREY 400-0096      | 0.036 GA        |
| HA3104A32                     | THRUBOLT- 5/16-18 X12.750                | 4.000 EA        |
| LB1119N                       | WARNING LABEL                            | 1.000 EA        |
| LC0006                        | CONNECTION LABEL                         | 1.000 EA        |
| NP1162L                       | SS INV UL CSA CC                         | 1.000 EA        |
| 07PA1016                      | PACKAGING GROUP, STD -E (07 TALL CRATE)  | 1.000 EA        |
| MN416A01                      | TAG-INSTAL-MAINT no wire (1200/bx) 3/19  | 1.000 EA        |
| PE-0000001                    | ZRTG PE ASSEMBLY                         | 1.000 EA        |

**AC Induction Motor Performance Data**

Record # 36492 - Typical performance - not guaranteed values

|                               |                    |                        |
|-------------------------------|--------------------|------------------------|
| <b>Winding:</b> 07WGX493-R003 | <b>Type:</b> 0748M | <b>Enclosure:</b> TEBC |
|-------------------------------|--------------------|------------------------|

| Nameplate Data        |              |              |    | 575 V, 60 Hz:<br>Single Voltage Motor |                         |
|-----------------------|--------------|--------------|----|---------------------------------------|-------------------------|
| Rated Output (HP)     | 10           |              |    | Full Load Torque                      | 29.7 LB-FT              |
| Volts                 | 575          |              |    | Start Configuration                   | direct on line          |
| Full Load Amps        | 9.8          |              |    | Breakdown Torque                      | 87.4 LB-FT              |
| R.P.M.                | 1760         |              |    | Pull-up Torque                        | 52.1 LB-FT              |
| Hz                    | 60           | Phase        | 3  | Locked-rotor Torque                   | 57.7 LB-FT              |
| NEMA Design Code      | A            | KVA Code     | H  | Starting Current                      | 70.9 A                  |
| Service Factor (S.F.) | 1            |              |    | No-load Current                       | 4.1 A                   |
| NEMA Nom. Eff.        | 92.4         | Power Factor | 82 | Line-line Res. @ 25°C                 | 1.44 Ω                  |
| Rating - Duty         | 40C AMB-CONT |              |    | Temp. Rise @ Rated Load               | 59°C                    |
| S.F. Amps             |              |              |    | Temp. Rise @ S.F. Load                | 73°C                    |
|                       |              |              |    | Locked-rotor Power Factor             | 35                      |
|                       |              |              |    | Rotor inertia                         | 1.18 LB-FT <sup>2</sup> |

Load Characteristics 575 V, 60 Hz, 10 HP

| % of Rated Load | 25   | 50   | 75   | 100  | 125  | 150  |
|-----------------|------|------|------|------|------|------|
| Power Factor    | 44   | 67   | 78   | 83   | 84   | 85   |
| Efficiency      | 89.7 | 92.9 | 93   | 92.1 | 91.4 | 90.2 |
| Speed           | 1790 | 1781 | 1771 | 1762 | 1750 | 1739 |
| Line amperes    | 4.67 | 6.02 | 7.8  | 9.82 | 12.2 | 14.6 |

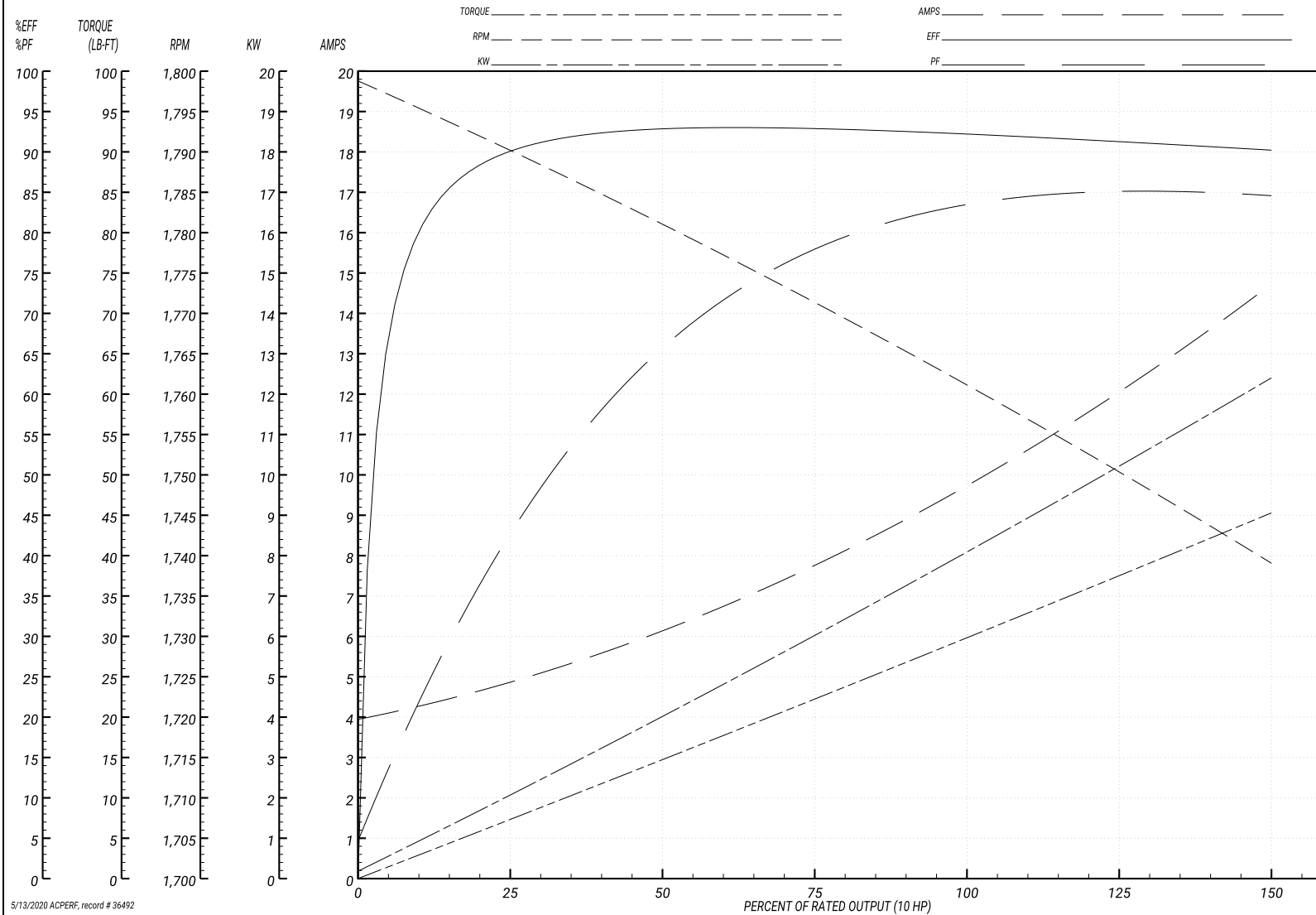
Performance Graph at 575V, 60Hz, 10.0HP Typical performance - Not guaranteed values

ABB Motors and Mechanical Inc.

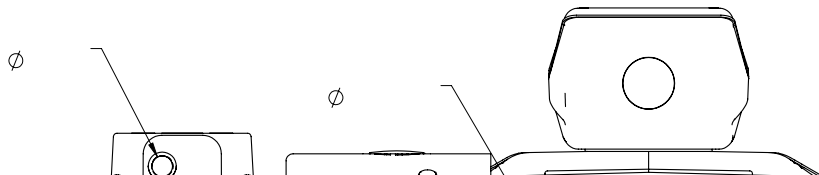
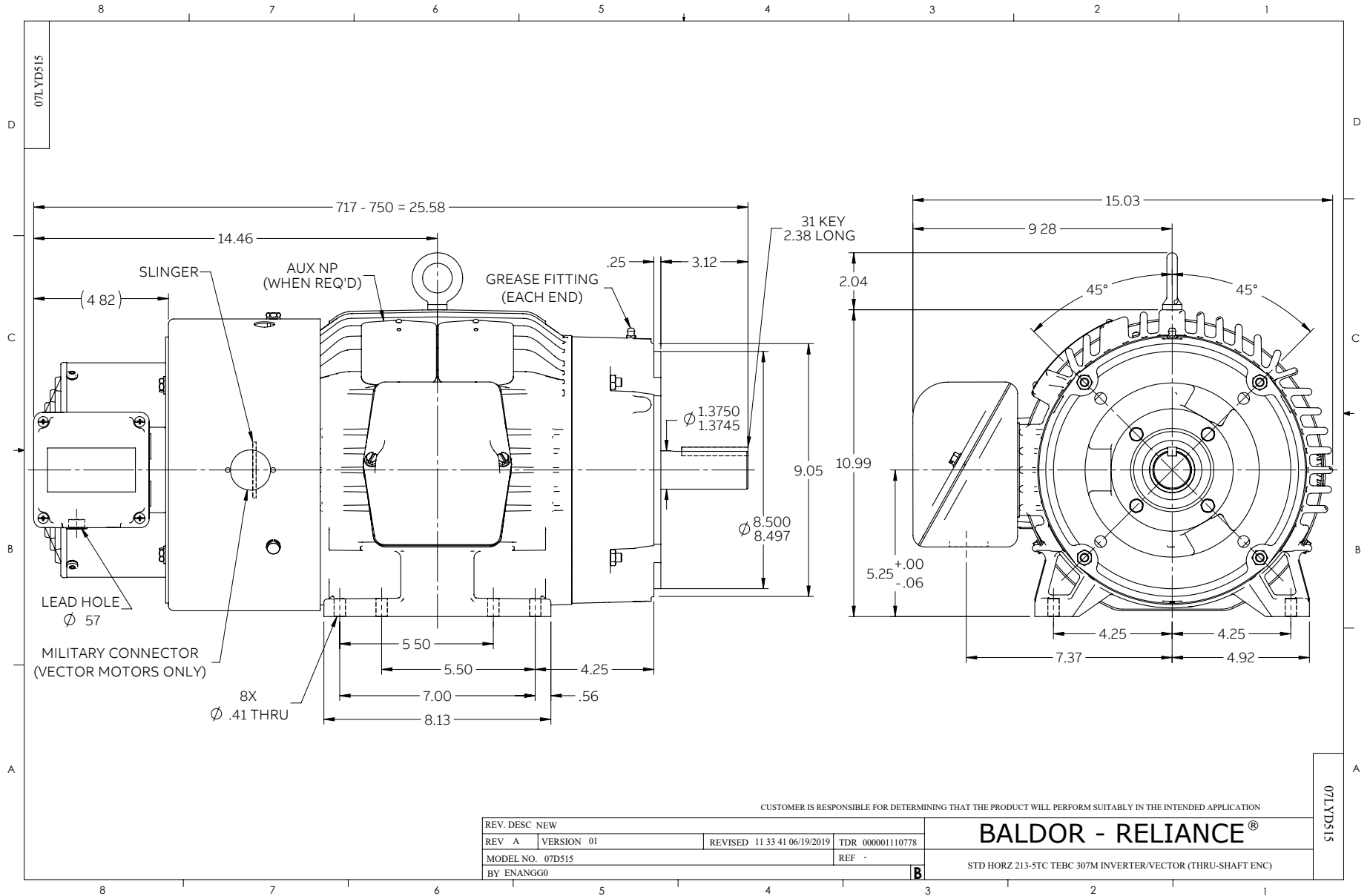
WINDING # 07WGX493

Typical performance - not guaranteed values.

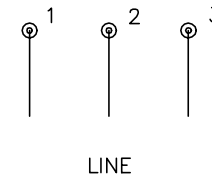
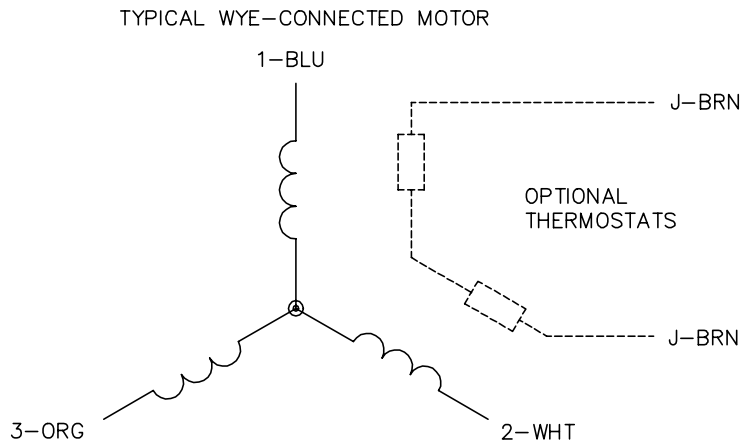
10 HP 3 PH 60 HZ 1760 RPM 575 V 0748M  
 TORQUES(LB-FT): PO=87.4 PU=52.1 LR=57.7 LRA=70.9



5/13/2020 ACPERF, record # 36492



CD0006



NOTES:

1. THREE LEAD MOTOR MAY BE EITHER WYE CONNECTED OR DELTA CONNECTED.
2. INTERCHANGE ANY TWO LINE LEADS TO REVERSE ROTATION.
3. OPTIONAL THERMOSTATS ARE PROVIDED WHEN SPECIFIED.
4. ACTUAL NUMBER OF INTERNAL PARALLEL CIRCUITS MAY VARY.
5. LEAD COLORS ARE OPTIONAL. LEADS MUST BE NUMBERED AS SHOWN.

CD0006

|                                   |                              |                   |
|-----------------------------------|------------------------------|-------------------|
| REV. DESC: ADD CLASS CONN00000007 |                              |                   |
| REV. LTR: E                       | VERSION: 01                  | TDR: 000001099922 |
| FILE: \AAA\00005\141              | REVISED: 10:24:49 02/19/2019 | BY: ENBRIRO       |
| MTL: -                            | © □                          |                   |

**BALDOR - RELIANCE®**

3PH, SV, 3 LEADS, WYE OR DELTA CONNECTED

SH 1 of 1

Marketing maintained PDF of MN416:

<http://www.baldor.com/support/Literature/Load.ashx/MN416?ManNumber=MN416>